

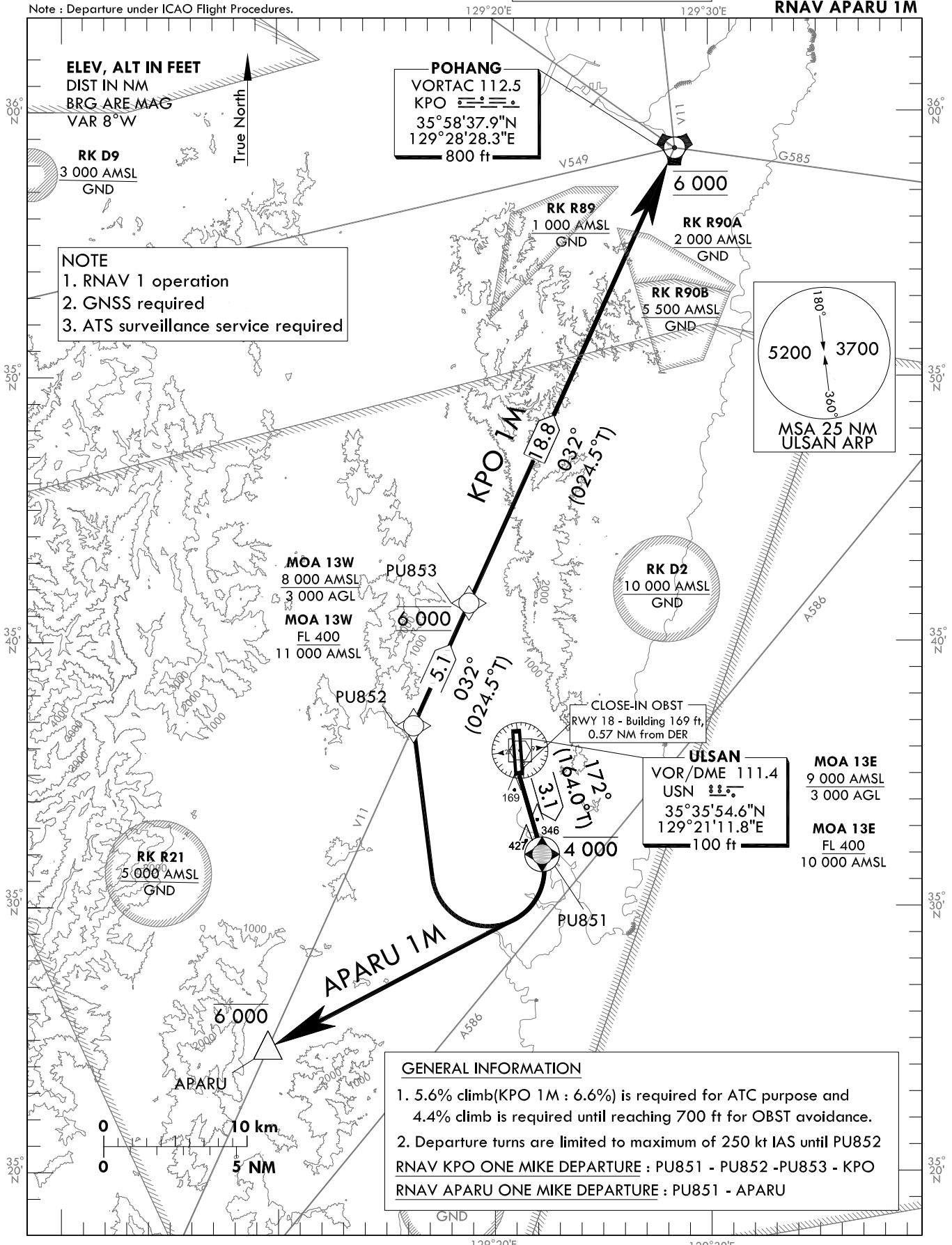
**STANDARD DEPARTURE CHART
INSTRUMENT(SID) - ICAO**

TRANSITION ALT 14 000
TRANSITION LVL FL 140

POHANG DEP 120.2, 124.25
232.4
ULSAN TWR 118.75

**ULSAN/Ulsan(RKPU)
RWY 18
RNAV KPO 1M
RNAV APARU 1M**

Note : Departure under ICAO Flight Procedures.



NOTE
1. RNAV 1 operation
2. GNSS required
3. ATS surveillance service required

GENERAL INFORMATION
1. 5.6% climb(KPO 1M : 6.6%) is required for ATC purpose and 4.4% climb is required until reaching 700 ft for OBST avoidance.
2. Departure turns are limited to maximum of 250 kt IAS until PU852
RNAV KPO ONE MIKE DEPARTURE : PU851 - PU852 - PU853 - KPO
RNAV APARU ONE MIKE DEPARTURE : PU851 - APARU

Change : Establishment of Pohang DEP frequency(124.25).

ULSAN/Ulsan(RKPU)
RWY 18
RNAV KPO 1M, RNAV APARU 1M

AERONAUTICAL DATA TABULATION

Standard Instrument Departure Procedure Coding Tables

RNAV KPO 1M

Serial Number	Path Descriptor	Waypoint Identifier	Fly-over	Course/Track °M(T)	Distance (NM)	Turn direction	Altitude (ft)	Speed (kt)	Coordinates	VPA/RDH	Navigation specification	Remarks
001	CF	PUB51	Y	172(164.0)	3.1	-	-4 000	-250	35°31'59.3"N 129°22'12.1"E	-	RNAV 1	-
002	DF	PUB52	-	-	-	R	-	-250	35°36'51.2"N 129°16'16.8"E	-	RNAV 1	-
003	TF	PUB53	-	032(024.5)	5.1	-	@6 000	-	35°41'28.6"N 129°18'51.5"E	-	RNAV 1	-
004	TF	KPO	-	032(024.5)	18.8	-	@6 000	-	35°58'37.9"N 129°28'28.3"E	-	RNAV 1	-

RNAV APARU 1M

Serial Number	Path Descriptor	Waypoint Identifier	Fly-over	Course/Track °M(T)	Distance (NM)	Turn direction	Altitude (ft)	Speed (kt)	Coordinates	VPA/RDH	Navigation specification	Remarks
001	CF	PUB51	Y	172(164.0)	3.1	-	-4 000	-250	35°31'59.3"N 129°22'12.1"E	-	RNAV 1	-
002	DF	APARU	-	-	-	R	-6 000	-	35°24'42.1"N 129°09'32.1"E	-	RNAV 1	-

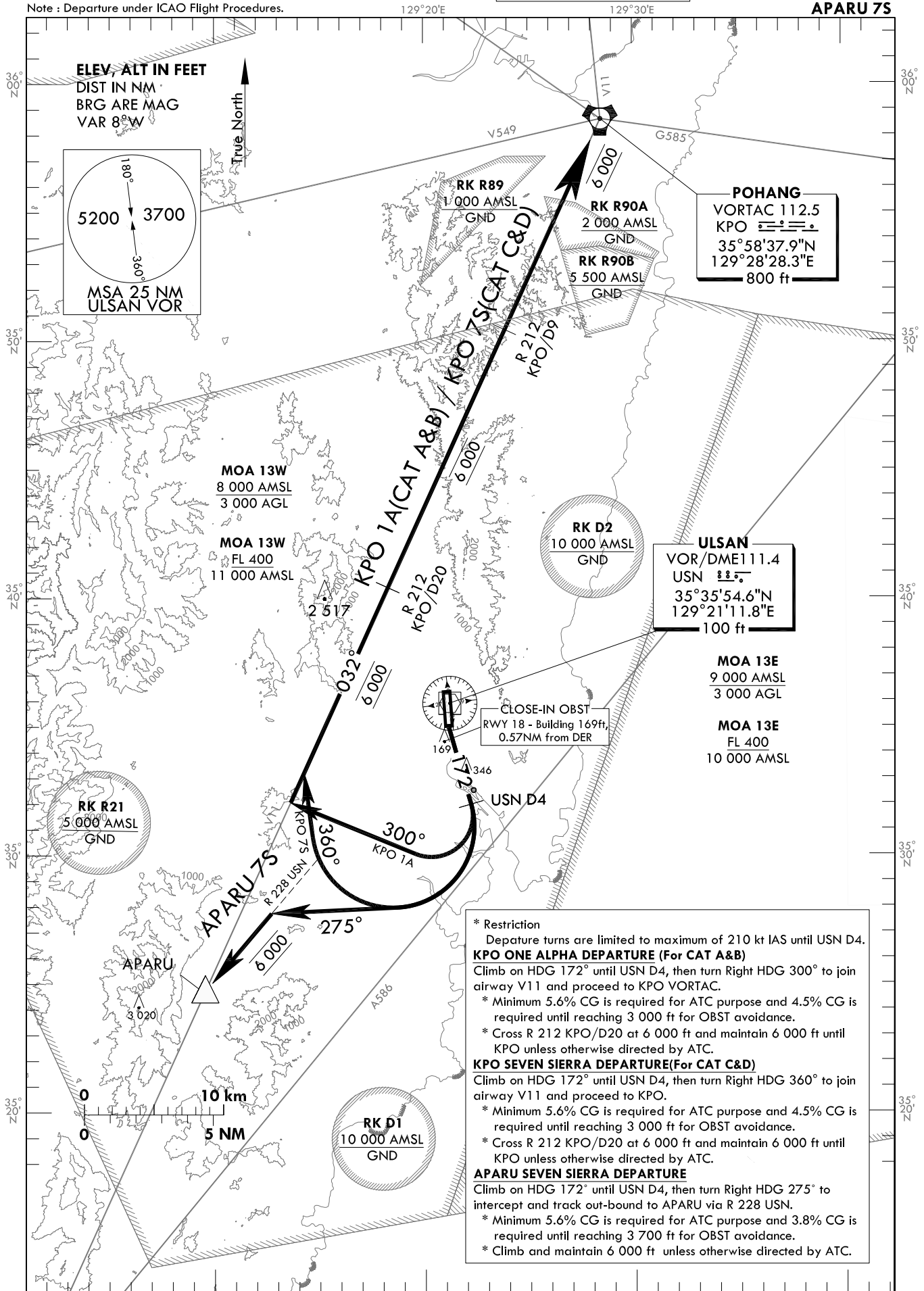
STANDARD DEPARTURE CHART
INSTRUMENT(SID) - ICAO

TRANSITION ALT 14 000
TRANSITION LVL FL 140

POHANG DEP 120.2, 124.25
232.4
ULSAN TWR 118.75

ULSAN/Ulsan(RKPU)
RWY 18
KPO 1A, KPO 7S
APARU 7S

Note : Departure under ICAO Flight Procedures.



Change : Establishment of Pohang DEP frequency(124.25).

INTENTIONALLY

LEFT

BLANK

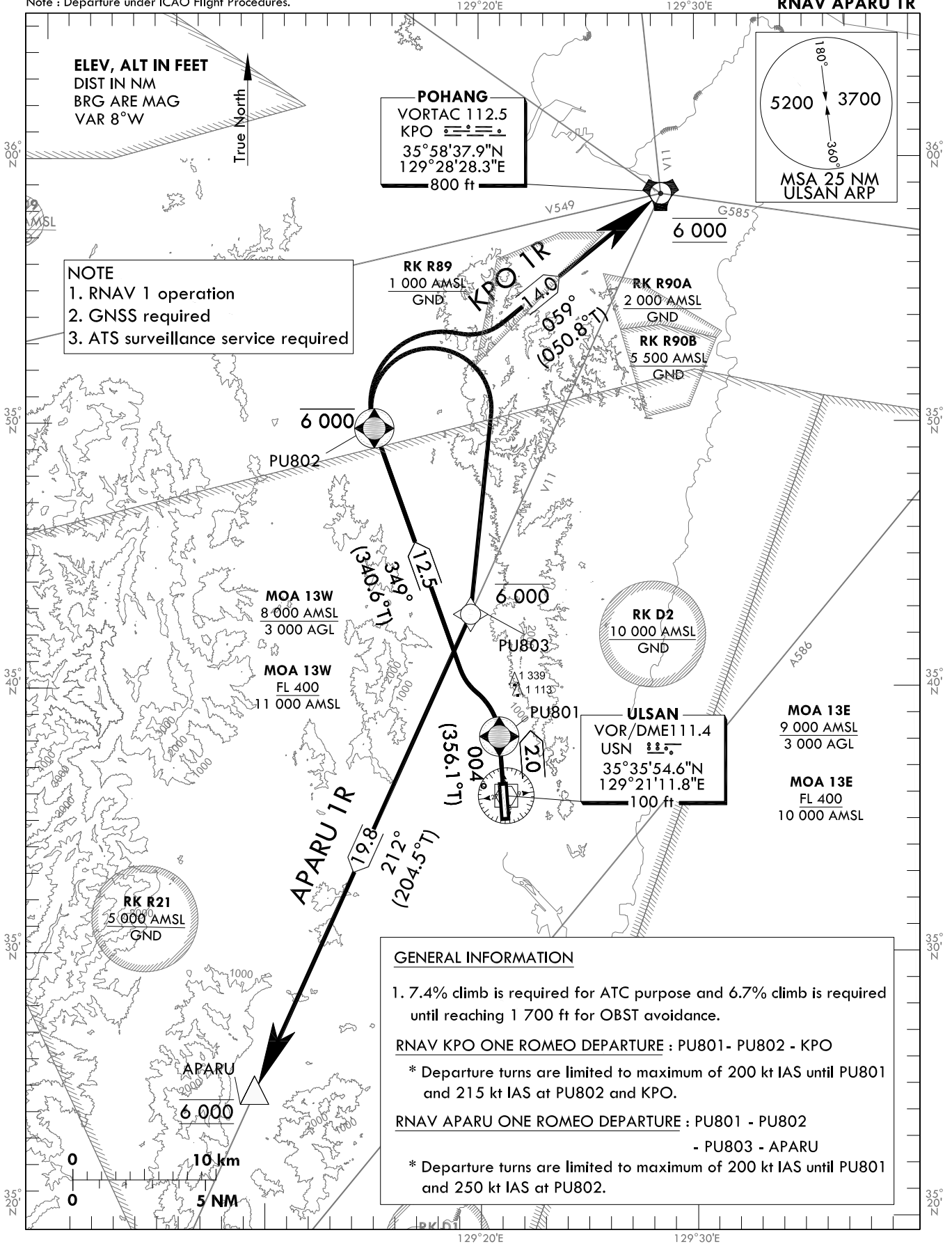
**STANDARD DEPARTURE CHART
INSTRUMENT(SID) - ICAO**

TRANSITION ALT 14 000
TRANSITION LVL FL 140

POHANG DEP 120.2, 124.25
232.4
ULSAN TWR 118.75

**ULSAN/Ulsan(RKPU)
RWY 36
RNAV KPO 1R
RNAV APARU 1R**

Note : Departure under ICAO Flight Procedures.



Change : Establishment of Pohang DEP frequency(124.25).

ULSAN/Ulsan(RKPU)
RWY 36
RNAV KPO 1R, RNAV APARU 1R

AERONAUTICAL DATA TABULATION

Standard Instrument Departure Procedure Coding Tables

RNAV KPO 1R

Serial Number	Path Descriptor	Waypoint Identifier	Fly-over	Course/Track °M(°T)	Distance (NM)	Turn direction	Altitude (ft)	Speed (kt)	Coordinates	VPA/RDH	Navigation specification	Remarks
001	CF	PUB01	Y	004(356.1)	2.0	-	-	-200	35°38'08.8"N 129°20'53.5"E	-	RNAV 1	-
002	CF	PUB02	Y	349(340.6)	12.5	-	-6 000	-215	35°49'48.4"N 129°15'08.6"E	-	RNAV 1	-
003	TF	KPO	-	059(050.8)	14.0	-	@6 000	-215	35°58'37.9"N 129°28'28.3"E	-	RNAV 1	-

RNAV APARU 1R

Serial Number	Path Descriptor	Waypoint Identifier	Fly-over	Course/Track °M(°T)	Distance (NM)	Turn direction	Altitude (ft)	Speed (kt)	Coordinates	VPA/RDH	Navigation specification	Remarks
001	CF	PUB01	Y	004(356.1)	2.0	-	-	-200	35°38'08.8"N 129°20'53.5"E	-	RNAV 1	-
002	CF	PUB02	Y	349(340.6)	12.5	-	-6 000	-250	35°49'48.4"N 129°15'08.6"E	-	RNAV 1	-
003	DF	PUB03	-	-	-	R	-6 000	-	35°42'45.9"N 129°19'34.7"E	-	RNAV 1	-
004	TF	APARU	-	212(204.5)	19.8	-	@6 000	-	35°24'42.1"N 129°09'32.1"E	-	RNAV 1	-

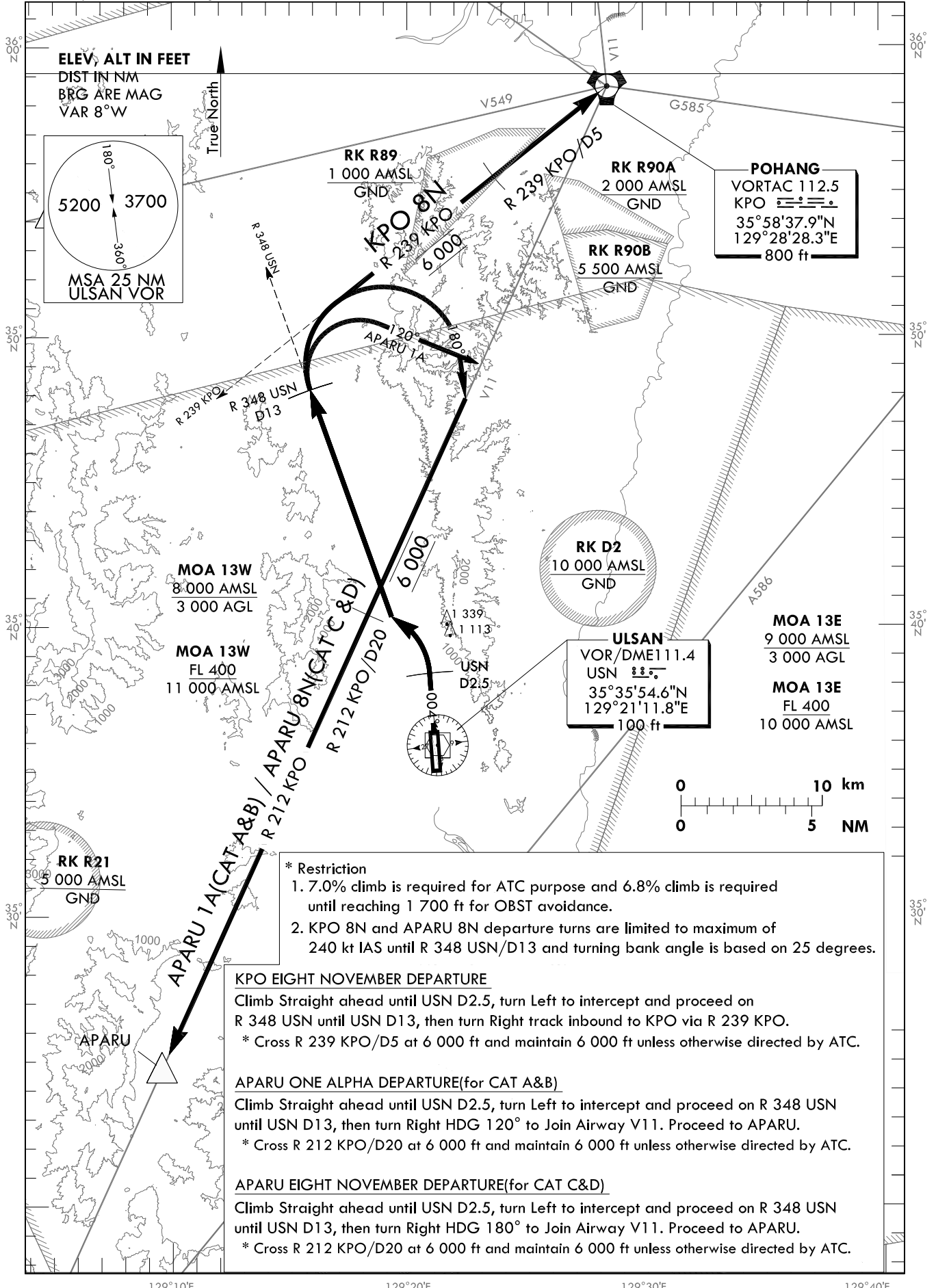
**STANDARD DEPARTURE CHART
INSTRUMENT(SID) - ICAO**

TRANSITION ALT 14 000
TRANSITION LVL FL 140

POHANG DEP 120.2, 124.25
232.4
ULSAN TWR 118.75

ULSAN/Ulsan(RKPU)
RWY 36
KPO 8N
APARU 1A, APARU 8N

Note : Departure under ICAO Flight Procedures.



- * Restriction
- 7.0% climb is required for ATC purpose and 6.8% climb is required until reaching 1 700 ft for OBST avoidance.
 - KPO 8N and APARU 8N departure turns are limited to maximum of 240 kt IAS until R 348 USN/D13 and turning bank angle is based on 25 degrees.

KPO EIGHT NOVEMBER DEPARTURE

Climb Straight ahead until USN D2.5, turn Left to intercept and proceed on R 348 USN until USN D13, then turn Right track inbound to KPO via R 239 KPO.
* Cross R 239 KPO/D5 at 6 000 ft and maintain 6 000 ft unless otherwise directed by ATC.

APARU ONE ALPHA DEPARTURE(for CAT A&B)

Climb Straight ahead until USN D2.5, turn Left to intercept and proceed on R 348 USN until USN D13, then turn Right HDG 120° to Join Airway V11. Proceed to APARU.
* Cross R 212 KPO/D20 at 6 000 ft and maintain 6 000 ft unless otherwise directed by ATC.

APARU EIGHT NOVEMBER DEPARTURE(for CAT C&D)

Climb Straight ahead until USN D2.5, turn Left to intercept and proceed on R 348 USN until USN D13, then turn Right HDG 180° to Join Airway V11. Proceed to APARU.
* Cross R 212 KPO/D20 at 6 000 ft and maintain 6 000 ft unless otherwise directed by ATC.

Change : Establishment of Pohang DEP frequency(124.25).

INTENTIONALLY

LEFT

BLANK